

Basic

North Star

North Star

1234 Main St
Houston, TX 77000
713/456-1234

Mgmt: **Alpha Mgmt**

Mgr: **Mark Smith**

SubMkt: **Bear Creek/ Copperfield**

Schools: **Lowery,Kahla,Langham Creek**

District: **Cypress-Fairbanks**

ADS#: 4549A Map#: 408G

TaxID#: **000000009012**

[Photos, Floorplans & Maps](#)



© 2013 Apartment Data Services

[Report Changes](#)

Updated: 10/30/2013

Units: **368**

Year Built: **2007**

Net Rentable: **364,124 sf**

Flrs/Levels: **2**

Occupancy: **95%**

Avg Size: **989 sf**

Market Price: **\$1,143/mo +EW**

Market Rate: **115.5 ¢/sf/mo**

Effective Price: **\$1,143/mo +EW**

Effective Rate: **115.6 ¢/sf/mo**

+EW → Resident pays (Electricity/Water)
[Prices Change Daily](#)

Policies

North Star

General

Deposits: **150-250**

Lease terms: **1-13 months**

Office hours: **M-F9-6, St9-5**

Locators: **50%-75%**

Concessions:

Fees

Application: **\$50**

Administration: **\$100**

Special Items

Rent subsidies:

Finance type:

Discounts: **Teachers, Police/Fire, Other**

Senior living:

Pets

Cats: **Y**

Dogs: **upto 50#/breed restricted**

Pet Deposits: **400/200nr fee**

Pet rent: **\$15/mo**

Utilities/Resident paid

Electric: **Y**

Water: **Y**

Gas:

Trash: **Y**

Qualification/Standards

Income: **3.00 x rent**

Credit check: **Y**

Rent History/RCR: **Y**

Co-signers:

1st time renters: **Y**

Amenities

North Star

Community/Indoor

Club house: **Y**

Business center: **Y**

Gym/Exercise room: **Y**

Game/Sports room: **Y**

Theater room:

Movie library-VHS/DVD:

Community/Outdoor

Pools: **2**

Jacuzzis/whirlpools:

Saunas:

Tennis courts:

Volleyball courts:

Play ground:

Picnic area: **Y**

BBQ grills: **Y**

Services

Dry cleaning:

Maids:

DoorToDoor trash pickup:

W/D rental:

Parking

Assigned:

Open/not covered: **Y**

Carports:

Parking garage:

Parking space rental:

Indiv garage attached:

detached: **\$95/mo**

Security

Perimeter fence: **Y**

Gated entrance: **Y**

Guard at entrance:

Patrol service:

Live-on officers: **Y**

TV monitors:

Intrusion alarms/unit: **Y**

Cable/Internet

Basic channels: **Charge**

Movie channels: **Charge**

Hi-speed internet: **Y**

Misc

Furnished units:

Handicap modified units:

Interior

W/D connections:

W/D machines: **All**

Fire places:

Ceiling fans: **All**

Vaulted or 9'+ ceilings: **All**

Crown molding: **All**

Special carpet-berber/etc:

NonCarpet-wood/tile/marble: **Some**

Built-Ins/desks/shelves: **Some**

Miniblinds: **All**

Wet bars:

Garden/large tubs: **All**

Walk-in showers:

Walk-in closets: **All**

Microwaves: **All**

Self cleaning ovens: **All**

Frost free refrigerators: **All**

Ice makers: **All**

Dishwashers: **All**

Garbage disposals: **All**

Corporate units:

Elevators:

Laundry rooms:

Patio/balcony: **All**Outside storage/closet: **Some**

Floorplans

Show History: [2 years](#) [6 years](#) [12 years](#)

North Star

| Floorplan | Units | Size sf | Market Price \$/mo | Market Rate c/sf/mo | Concession \$/mo | Utilities \$/mo | Effective Price \$/mo | Effective Rate c/sf/mo |
|----------------------|------------|--------------|--------------------------|---------------------------|---------------------|--------------------|-----------------------------|------------------------------|
| 1x1 | 24 | 758 | 920 +EW | 121.4 | - | - | 920 +EW | 121.4 |
| 1x1 | 24 | 767 | 930 +EW | 121.3 | - | - | 930 +EW | 121.3 |
| 1x1 | 84 | 767 | 980 +EW | 127.8 | - | - | 980 +EW | 127.8 |
| 1x1 | 16 | 772 | 1,020 +EW | 132.1 | - | - | 1,020 +EW | 132.1 |
| 1x1 | 72 | 841 | 1,081 +EW | 128.5 | - | - | 1,081 +EW | 128.5 |
| Summary-1Bed | 220 | 791 | 1,004 +EW | 126.9 | - | - | 1,004 +EW | 126.9 |
| 2x2 | 48 | 1,177 | 1,339 +EW | 113.8 | - | - | 1,339 +EW | 113.8 |
| 2x2 | 84 | 1,340 | 1,375 +EW | 102.6 | - | - | 1,375 +EW | 102.6 |
| Summary-2Bed | 132 | 1,281 | 1,362 +EW | 106.3 | - | - | 1,362 +EW | 106.3 |
| 3x2 | 16 | 1,321 | 1,253 +EW | 94.9 | - | - | 1,253 +EW | 94.9 |
| Summary-3Bed | 16 | 1,321 | 1,253 +EW | 94.9 | - | - | 1,253 +EW | 94.9 |
| Summary-Total | 368 | 989 | 1,143 +EW | 115.5 | - | - | 1,143 +EW | 115.6 |

+EW → Resident pays (Electricity/Water) [Prices Change Daily](#)

History 2 years (monthly)

North Star

| Date | Units | Occ | Market Price \$/mo | Market Rate c/sf/mo | Concession \$/mo | Utilities \$/mo | Effective Price \$/mo | Effective Rate c/sf/mo |
|---|-------|-----|--------------------------|---------------------------|---------------------|--------------------|-----------------------------|------------------------------|
| Nov 2013 | 368 | 95% | 1,143 +EW | 115.6 | - | - | 1,143 +EW | 115.6 |
| Oct 2013 | 368 | 95% | 1,143 +EW | 115.6 | - | - | 1,143 +EW | 115.6 |
| Sep 2013 | 368 | 96% | 1,020 +EW | 103.1 | - | - | 1,020 +EW | 103.1 |
| Aug 2013 | 368 | 96% | 1,020 +EW | 103.1 | - | - | 1,020 +EW | 103.1 |
| Jul 2013 | 368 | 95% | 959 +EW | 97.0 | - | - | 959 +EW | 97.0 |
| | 1Bed | 220 | 833 +EW | 105.3 | - | - | 833 +EW | 105.3 |
| | 2Bed | 132 | 1,191 +EW | 93.0 | - | - | 1,191 +EW | 93.0 |
| | 3Bed | 16 | 1,335 +EW | 101.1 | - | - | 1,335 +EW | 101.1 |
| Jun 2013 <small>close</small> | 368 | 97% | 983 +EW | 99.4 | - | - | 983 +EW | 99.4 |
| May 2013 | 368 | 96% | 983 +EW | 99.4 | - | - | 983 +EW | 99.4 |
| Apr 2013 | 368 | 96% | 983 +EW | 99.4 | - | - | 983 +EW | 99.4 |
| Mar 2013 | 368 | 94% | 919 +EW | 92.9 | - | - | 919 +EW | 92.9 |
| Feb 2013 | 368 | 92% | 941 +EW | 95.1 | - | - | 941 +EW | 95.1 |
| Jan 2013 | 368 | 95% | 926 +EW | 93.6 | - | - | 926 +EW | 93.6 |
| Dec 2012 | 368 | 95% | 929 +EW | 93.9 | - | - | 929 +EW | 93.9 |
| Nov 2012 | 368 | 95% | 929 +EW | 93.9 | - | - | 929 +EW | 93.9 |
| Oct 2012 | 368 | 93% | 929 +EW | 93.9 | - | - | 929 +EW | 93.9 |
| Sep 2012 | 368 | 93% | 912 +EW | 92.2 | - | - | 912 +EW | 92.2 |
| Aug 2012 | 368 | 94% | 908 +EW | 91.8 | - | - | 908 +EW | 91.8 |
| Jul 2012 | 368 | 93% | 996 +EW | 100.7 | - | - | 996 +EW | 100.7 |
| Jun 2012 | 368 | 93% | 996 +EW | 100.7 | - | - | 996 +EW | 100.7 |
| May 2012 | 368 | 93% | 996 +EW | 100.7 | - | - | 996 +EW | 100.7 |

| | | | | | | | | |
|--------------------------|-----|-----|-----------|-------|-----|---|-----------|-------|
| Apr 2012 | 368 | 94% | 1,009 +EW | 102.0 | - | - | 1,009 +EW | 102.0 |
| Mar 2012 | 368 | 93% | 1,009 +EW | 102.0 | - | - | 1,009 +EW | 102.0 |
| Feb 2012 | 368 | 94% | 1,009 +EW | 102.0 | -42 | - | 967 +EW | 97.8 |
| Jan 2012 | 368 | 94% | 1,009 +EW | 102.0 | -66 | - | 943 +EW | 95.3 |
| Dec 2011 | 368 | 93% | 1,009 +EW | 102.0 | - | - | 1,009 +EW | 102.0 |
| Nov 2011 | 368 | 93% | 1,009 +EW | 102.0 | - | - | 1,009 +EW | 102.0 |

+EW → Resident pays (Electricity/Water)

Photos

North Star



Copyright© 2013 Apartment Data Services, Inc.



Copyright© 2013 Apartment Data Services, Inc.

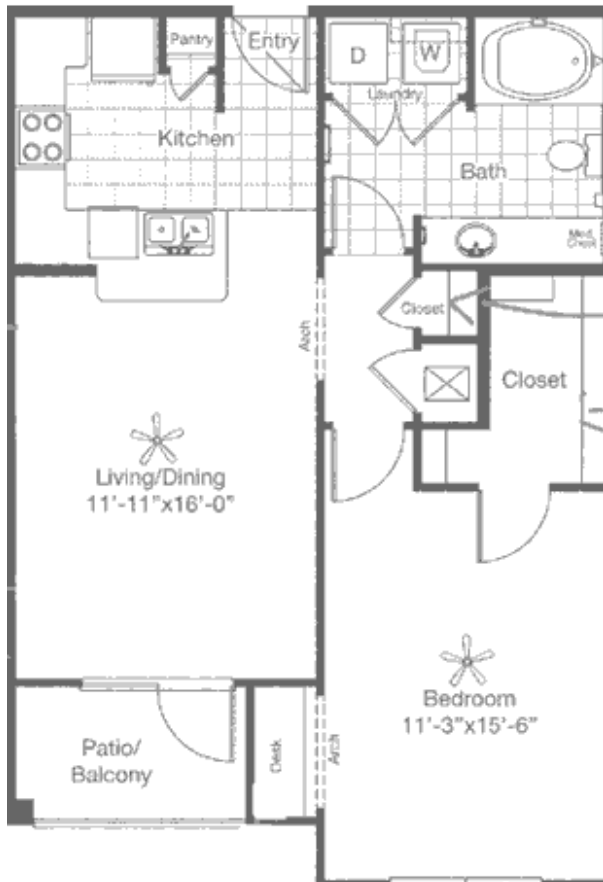


Copyright© 2013 Apartment Data Services, Inc.

Floorplan Diagrams

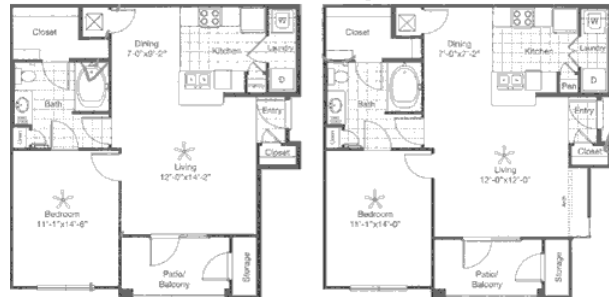
North Star

1 Bedroom, 1 Bath 758 to 767 Sqft.



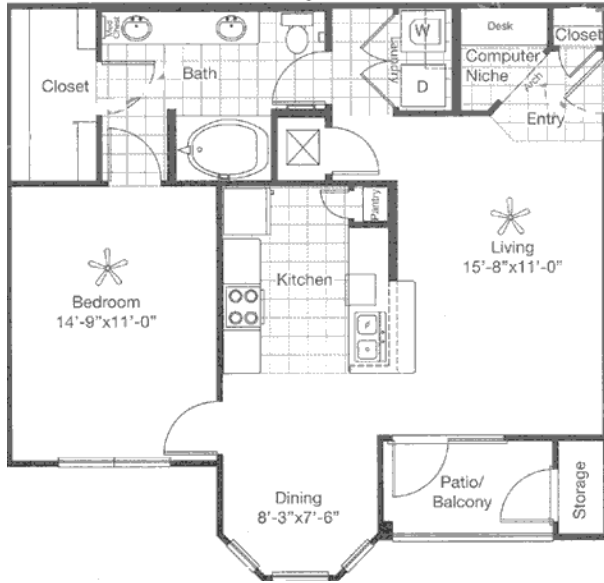
Copyright© 2013 Apartment Data Services, Inc.

1 Bedroom, 1 Bath 772 to 789 Sqft.



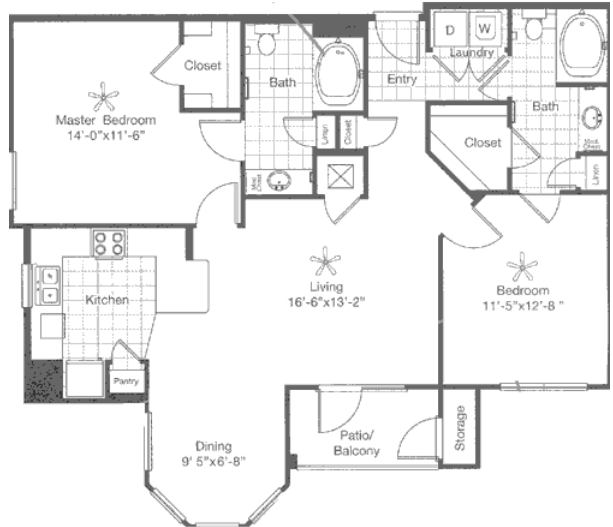
Copyright© 2013 Apartment Data Services, Inc.

**1 Bedroom, 1 Bath
841 Sqft.**



Copyright© 2013 Apartment Data Services, Inc.

**2 Bedroom, 2 Bath
1177 Sqft.**



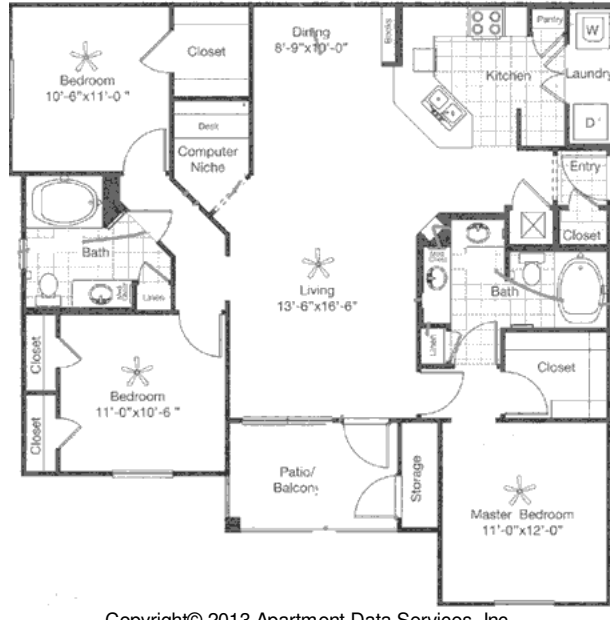
Copyright© 2013 Apartment Data Services, Inc.

**2 Bedroom, 2 Bath
1340 Sqft.**



Copyright© 2013 Apartment Data Services, Inc.

**3 Bedroom, 2 Bath
1321 Sqft.**



Copyright© 2013 Apartment Data Services, Inc.